

BROCHURE

ABRAJ 133

LARNACA, CYPRUS





ABRAJ 133

LARNACA, CYPRUS

|

Where Energy Meets
Everyday Comfort.





A PROMISING LOCATION FULL OF LIFE

Located in Larnaca, a fast-growing area in Cyprus, Abraj 133 stands next to Antonis Papadopoulos Stadium — an area known for action, sports, and exciting events.

Just 1.5 km from the beach and close to all daily needs, Abraj 133 offers the perfect balance between movement and calm living.

CONNECTED TO EVERYTHING THAT MATTERS

Abraj 133 is close to schools, playgrounds, sports facilities, supermarkets, and hospitals. It is also 1.5km away from American University of Cyprus (AUCY), making it ideal for students, families, and professionals.

Set in a calm and elegant neighborhood, it gives you comfort while keeping you close to the city's energy.





ABOUT ABRAJ 133

Abraj 133 offers only 11 apartments:
9 one-bedroom apartments
2 exclusive penthouses

Each apartment is designed with smart layouts, open living spaces, and large windows to bring in natural light. The building is modern, simple, and built for comfortable living.



**ABRAJ
133**


A LOCATION THAT STANDS OUT

 1.5 km from the beach.

 Minutes from supermarkets & hospital.

 Close to schools, universities & playgrounds.

 Next to Antonis Papadopoulos Stadium.

 Easy access to Larnaca center and main roads.



CALM LIVING WITH DAILY CONVENIENCE

Enjoy living in a peaceful and elegant neighborhood while having everything around you.

From schools and universities to sports facilities and supermarkets, daily life here is simple and easy.





PART OF A GROWING FUTURE

Abraj 133 is located near the well-known Land of Tomorrow development — a major mixed-use project planned in Larnaca.

The project is designed to include modern residential towers, green spaces, shops, and lifestyle facilities, creating a new center of activity in Larnaca.



A SMART CHOICE

Whether you are buying your first home or looking for a strong investment, Abraj 133 offers great value.

Location, demand, and smart design come together to create a property that is practical, modern, and ready for the future.



PERSPECTIVES

**MODERN
DESIGN**



ABRAJ 133

**PRIVATE
PENTHOUSES**







**ELEGANT
ENTRANCE**



ABRAJ 133

SIDE VIEW



NIGHT VIEW



ABRAJ 133

**HIGH-GRADE
FINISHES**



SMART LAYOUTS







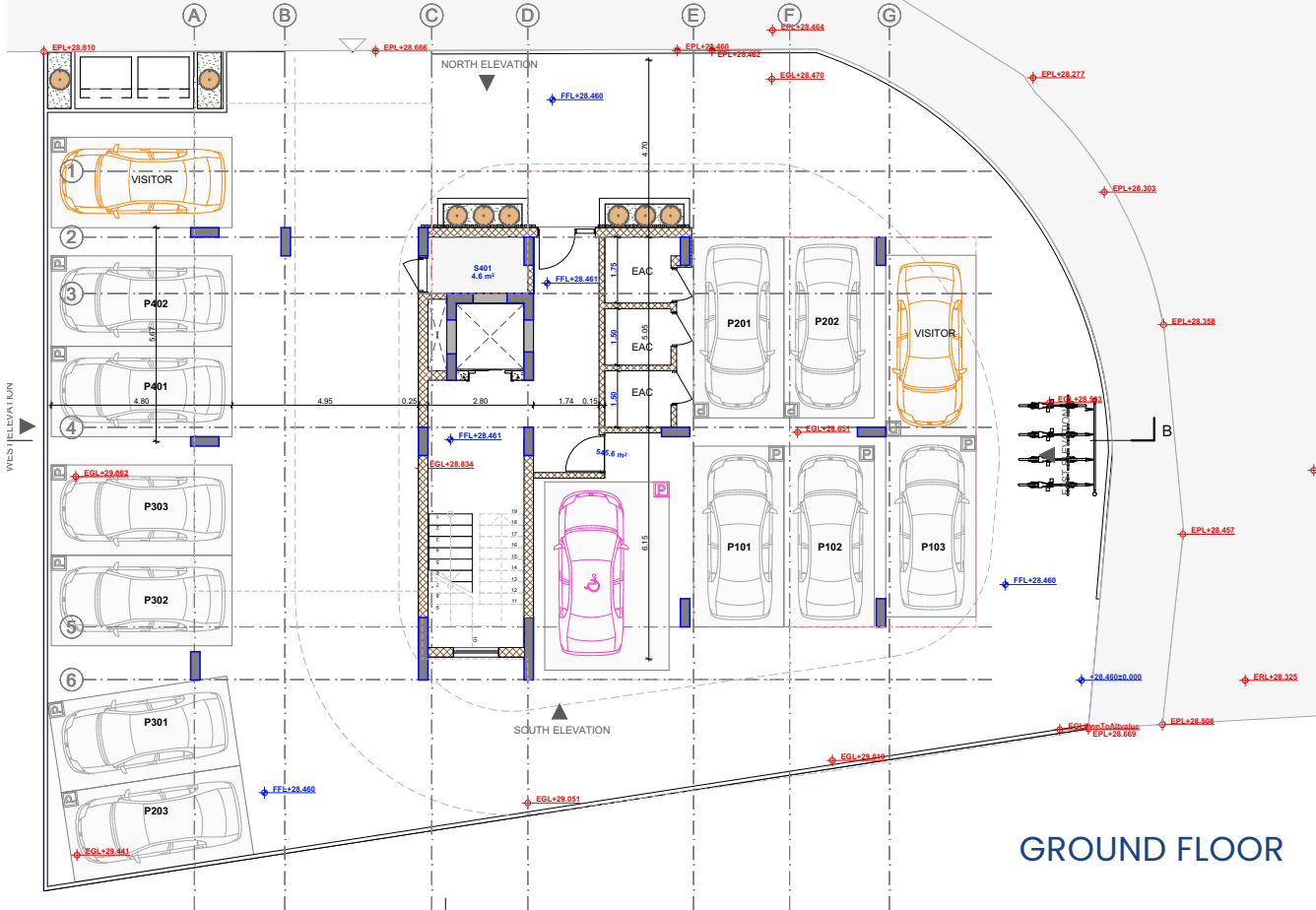
An architectural rendering of a modern, multi-story residential building. The building features a mix of white and grey facades, with vertical slats on some sections. It has several balconies with glass railings, some of which are landscaped with plants. The building is set against a backdrop of trees and a clear sky. At the base of the building, there is a sign that reads "ABRAJ 133". A few people are visible near the entrance, and a person is riding a bicycle on the street in the foreground.

FLOOR PLANS

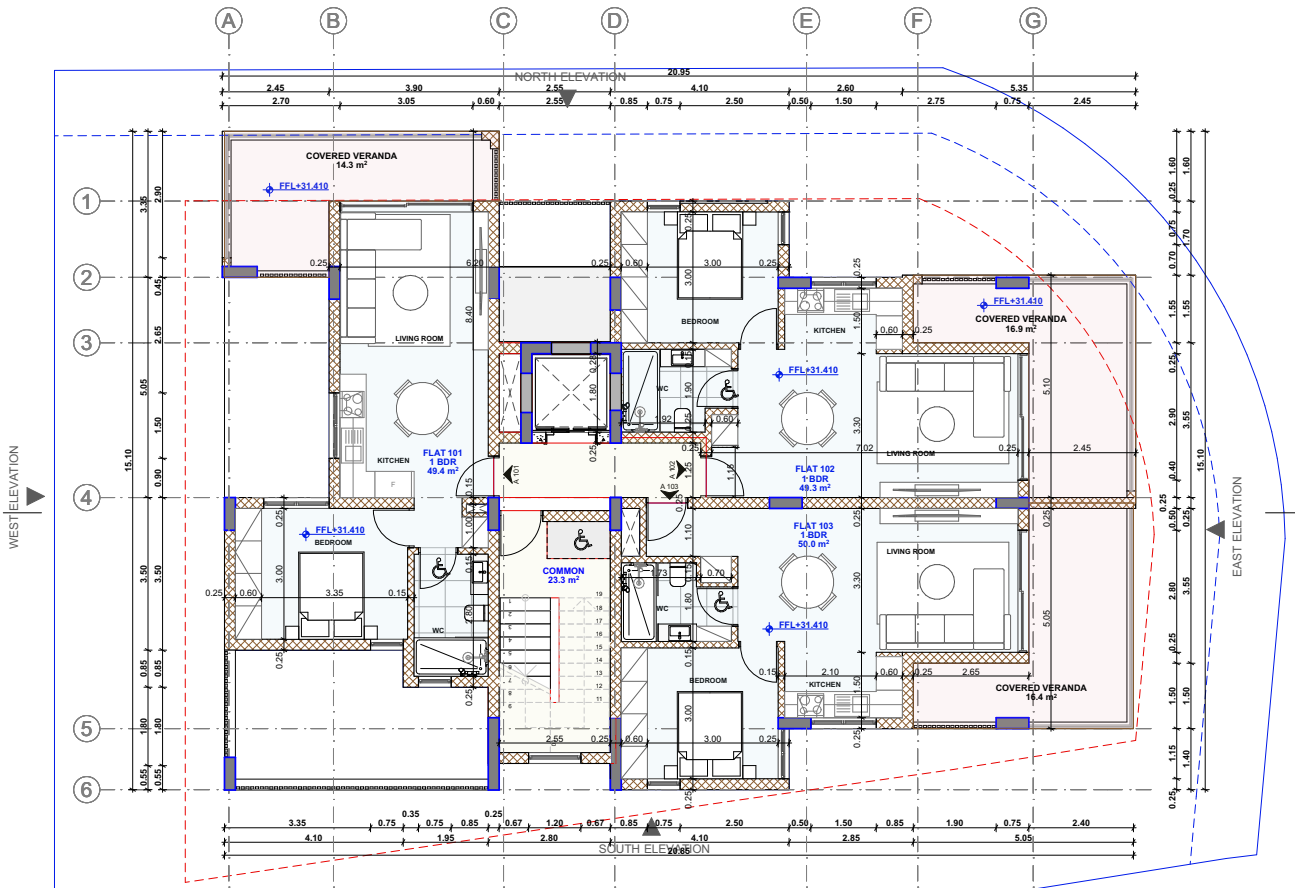
ABRAJ 133

28.692

88.2 m²

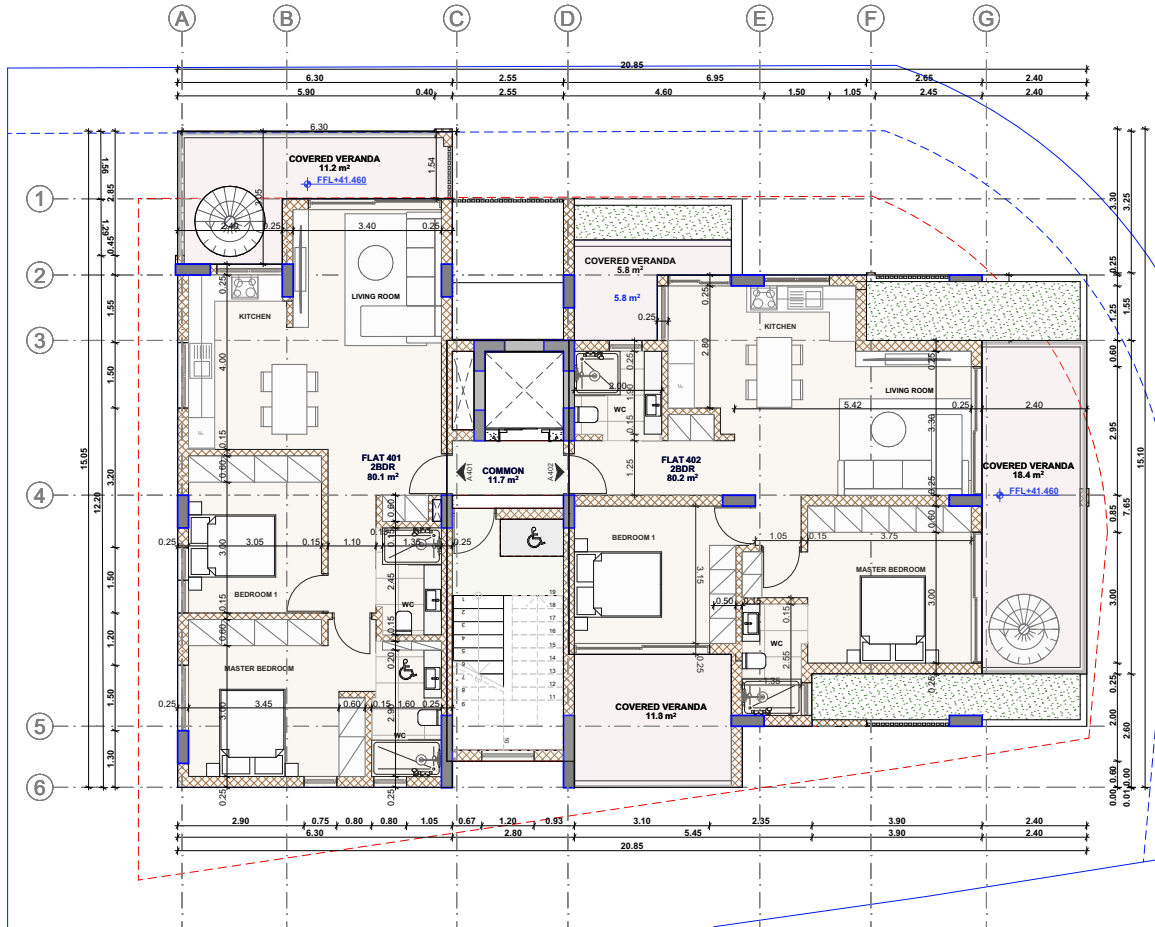


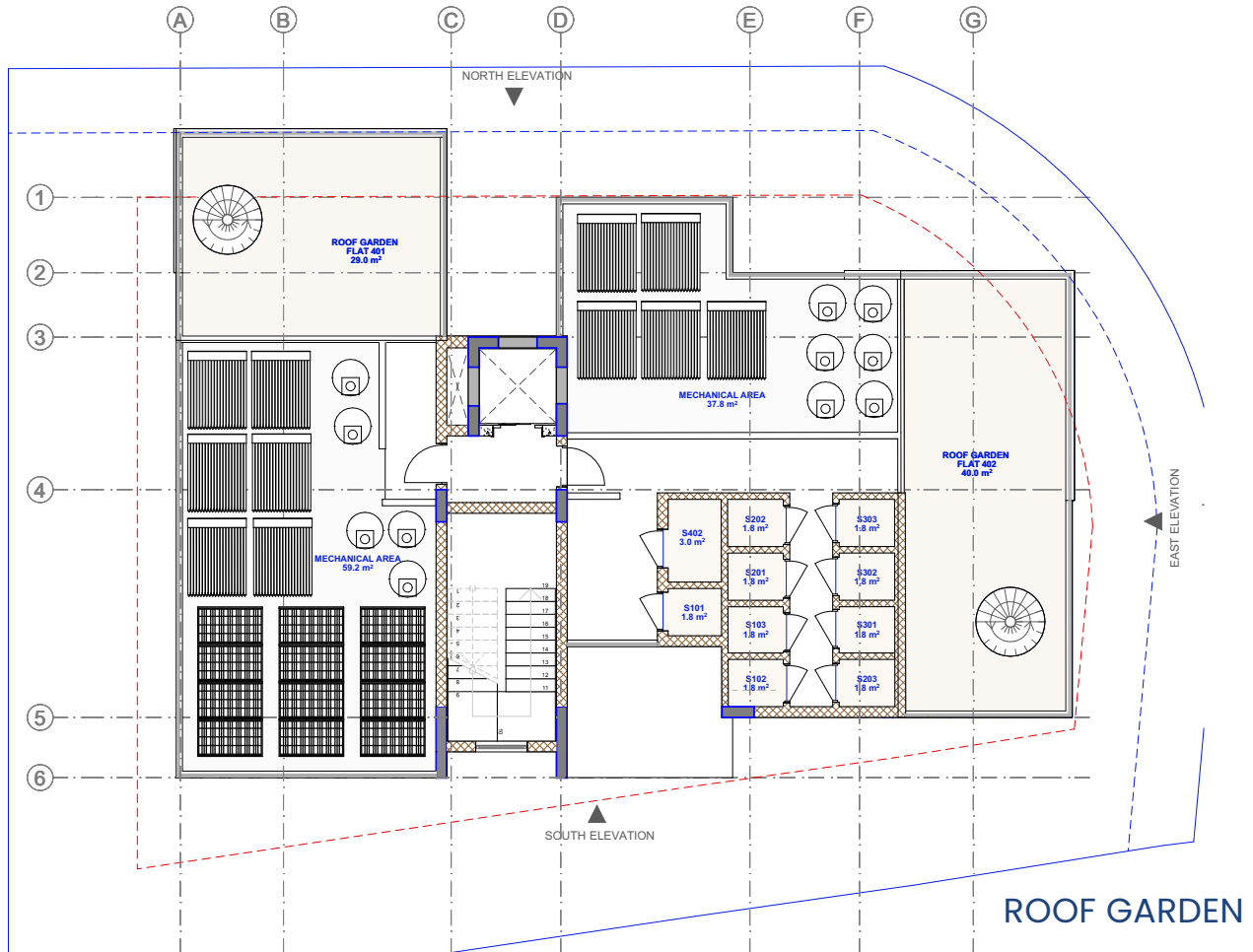
GROUND FLOOR



1st FLOOR

FIRST FLOOR







ABRAJ

DEVELOPMENTS

With a track record of successful projects and timely delivery, Abraj Developments continues to shape residential living across Cyprus. Each new address we build reflects our commitment to quality, trust, and long-term value.

ABRAJ

DEVELOPMENTS

LEBANON

Beirut Souks,
Downtown Beirut
+961 70 000 237

CYPRUS

Ermou 10, 6023,
Larnaca Cyprus
+357 96 123 000



info@abrajdevelopments.com

www.abrajdevelopments.com

