



ABRAJ 126

BROCHURE



WE FOUND YOU YOUR DREAM HOME
Where Elegance, luxury and simplicity meet...



This new project presents exceptional accommodations, blending all the essentials of an ideal home. Meticulously designed for your comfort and satisfaction, it radiates elegance. Situated in a unique location with a simple yet inviting atmosphere, it promises to make you feel right at home.

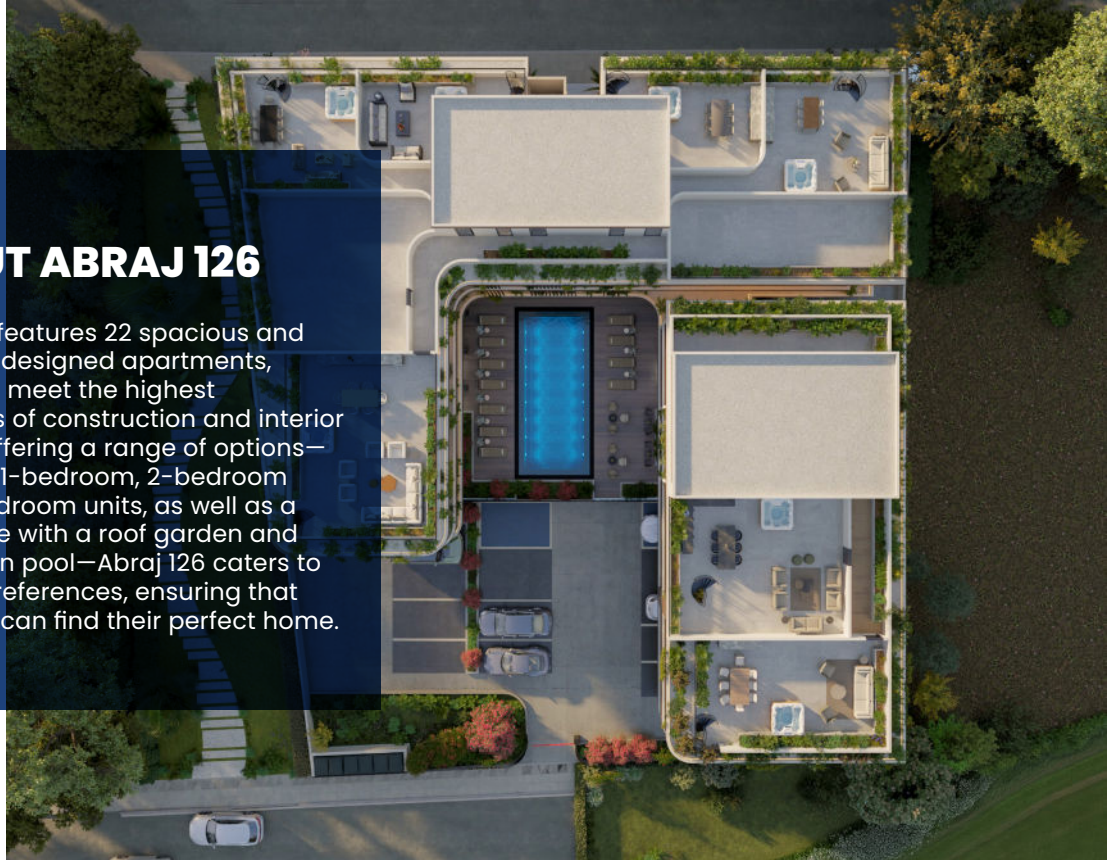
Welcome home.

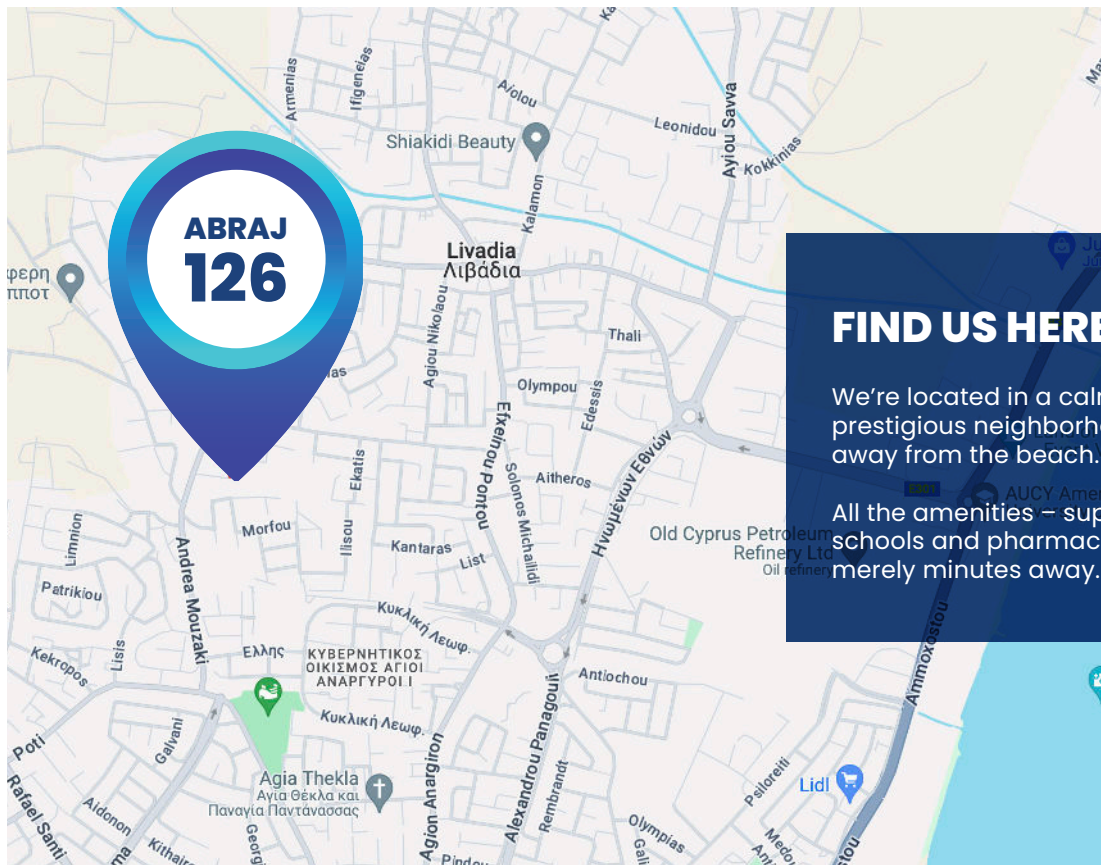
ABRAJ 126



ABOUT ABRAJ 126

Abraj 126 features 22 spacious and elegantly designed apartments, crafted to meet the highest standards of construction and interior quality. Offering a range of options—including 1-bedroom, 2-bedroom and 3-bedroom units, as well as a penthouse with a roof garden and a common pool—Abraj 126 caters to various preferences, ensuring that everyone can find their perfect home.





FIND US HERE

We're located in a calm and prestigious neighborhood, 2KM away from the beach.

All the amenities – supermarkets, schools and pharmacies – are merely minutes away.

An architectural rendering of a modern, multi-story residential or commercial building. The building features a light-colored facade, large windows, and balconies with glass railings. The roof is flat and covered with various green plants, including small trees and shrubs. The building is surrounded by lush landscaping, including a large green lawn in the foreground, several flowering bushes with pink and red blossoms, and a paved area with a few parked cars. The sky is a clear, bright blue with some light clouds. The word "PERSPECTIVES" is written in a bold, dark blue, sans-serif font across the center of the image.

PERSPECTIVES



ABRAJ126



ABRAJ126



126







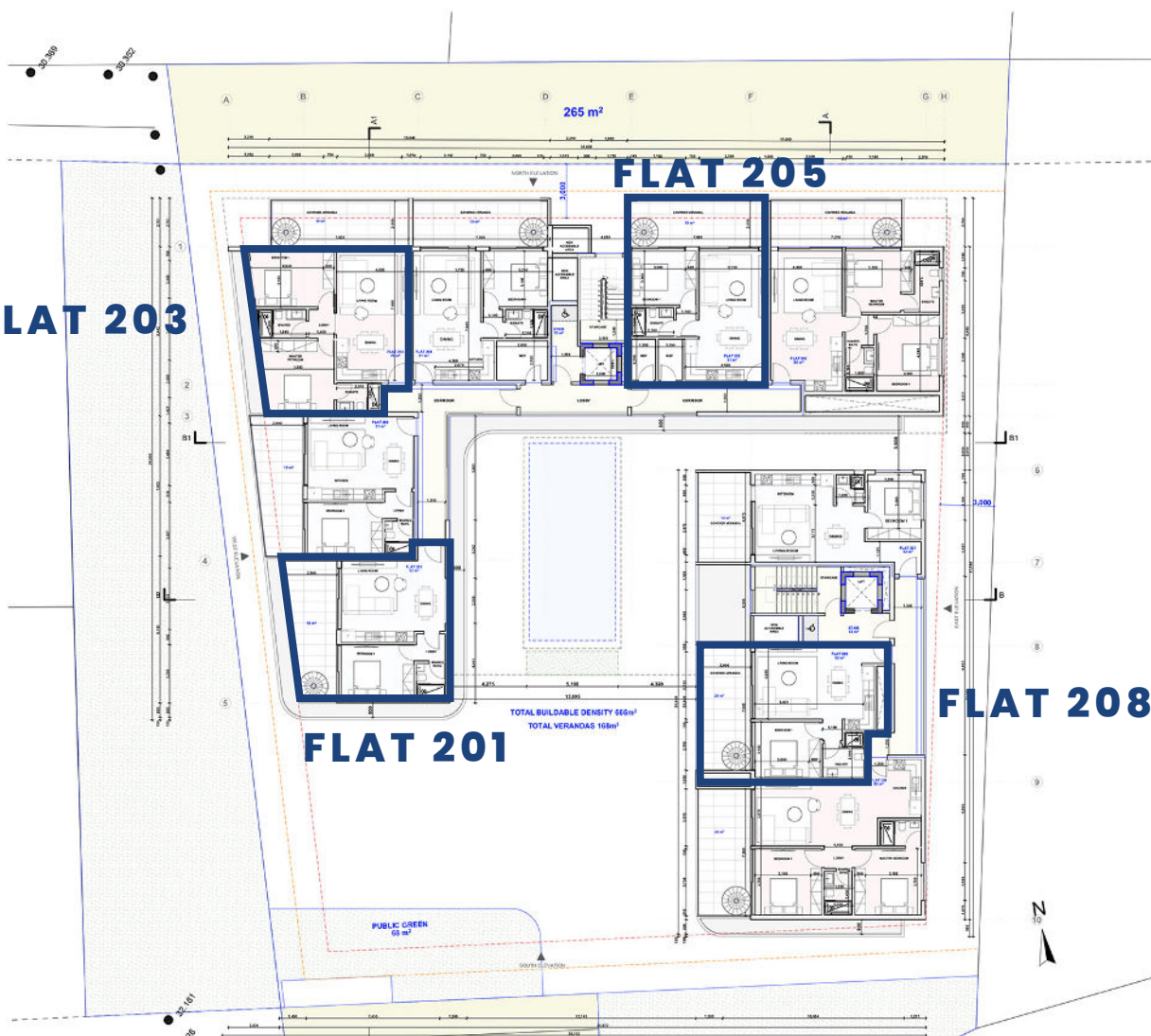




An architectural rendering of a modern, multi-story residential or commercial building. The building features a light-colored facade, large windows, and balconies with glass railings. The roof is green, with various plants and trees. The building is surrounded by lush greenery, including bushes and trees. A silver car is parked in a parking area in the foreground. The sky is blue with some clouds. The text "FLOOR PLANS" is overlaid in the center of the image.

FLOOR PLANS

126



FLAT 205

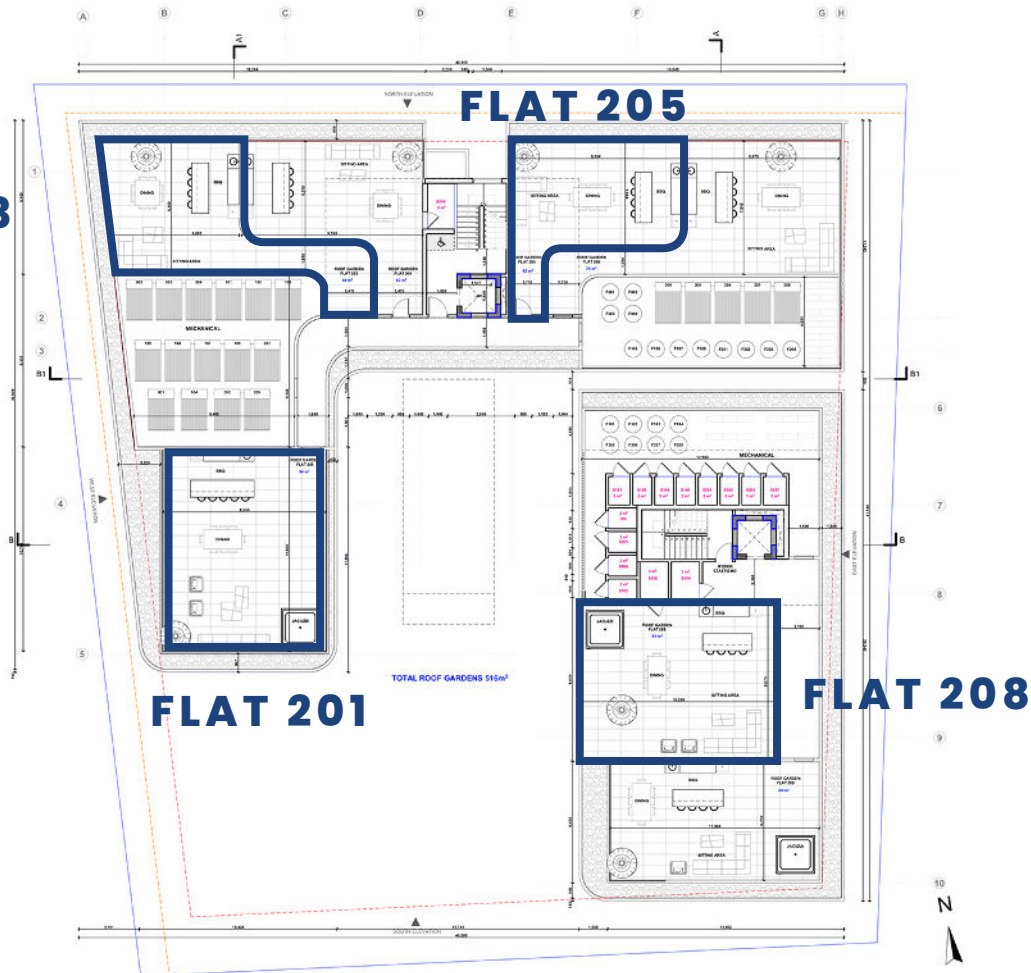
FLAT 208

FLAT 201

TOTAL BUILDABLE DENSITY 556m²
TOTAL VERANDAS 168m²

PUBLIC GREEN
63 m²

FLAT 203



ABRAJ

DEVELOPMENTS

LEBANON

Beirut Souks,
Downtown Beirut
+961 70 000 237

CYPRUS

Ermou 10, 6023,
Larnaca Cyprus
+357 96 123 000



info@abrajdevelopments.com

www.abrajdevelopments.com

